

CWDM MUX DEMUX

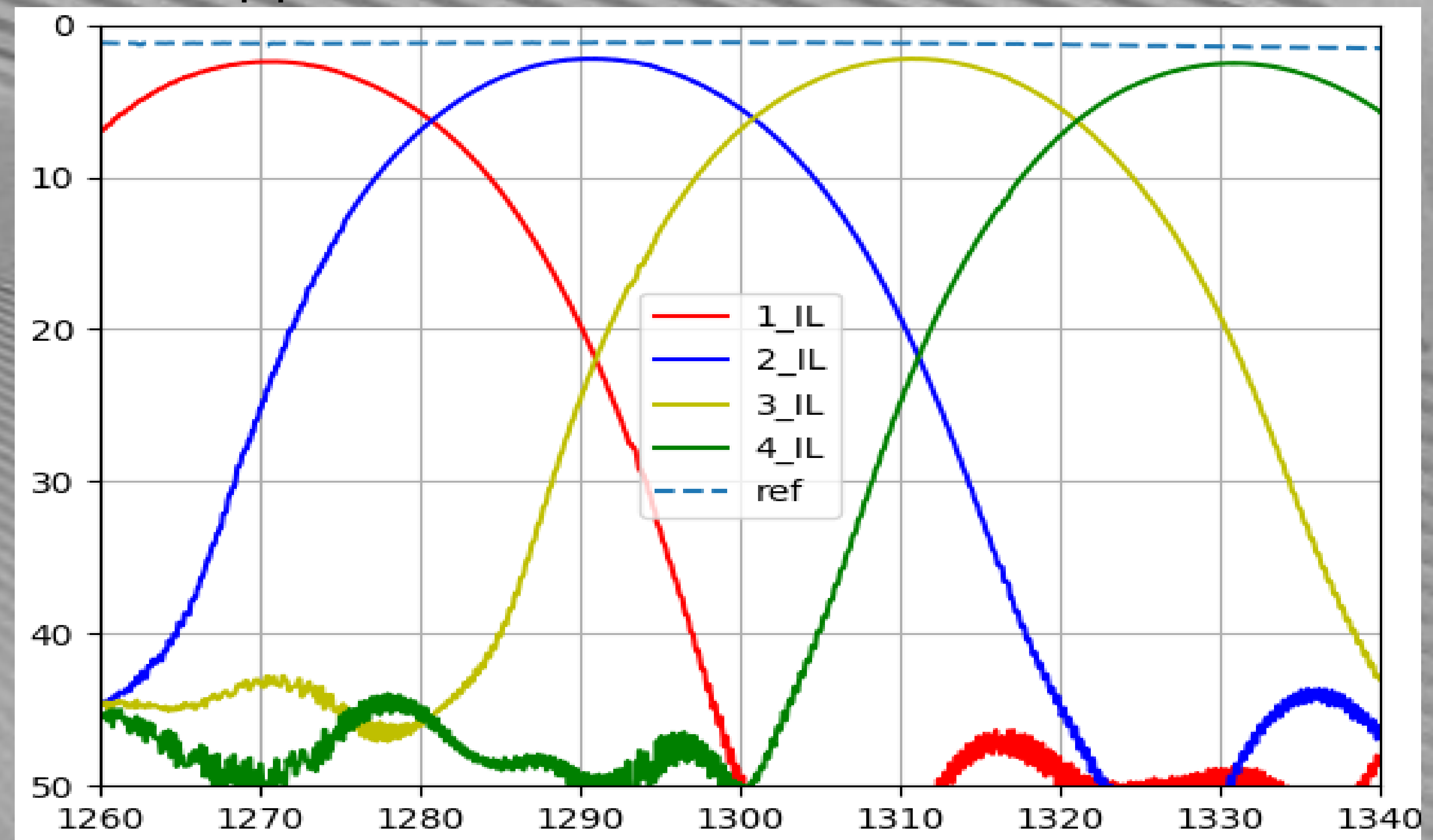
High Performance CWDM Mux/Demux Chip : 8" wafer process

Features

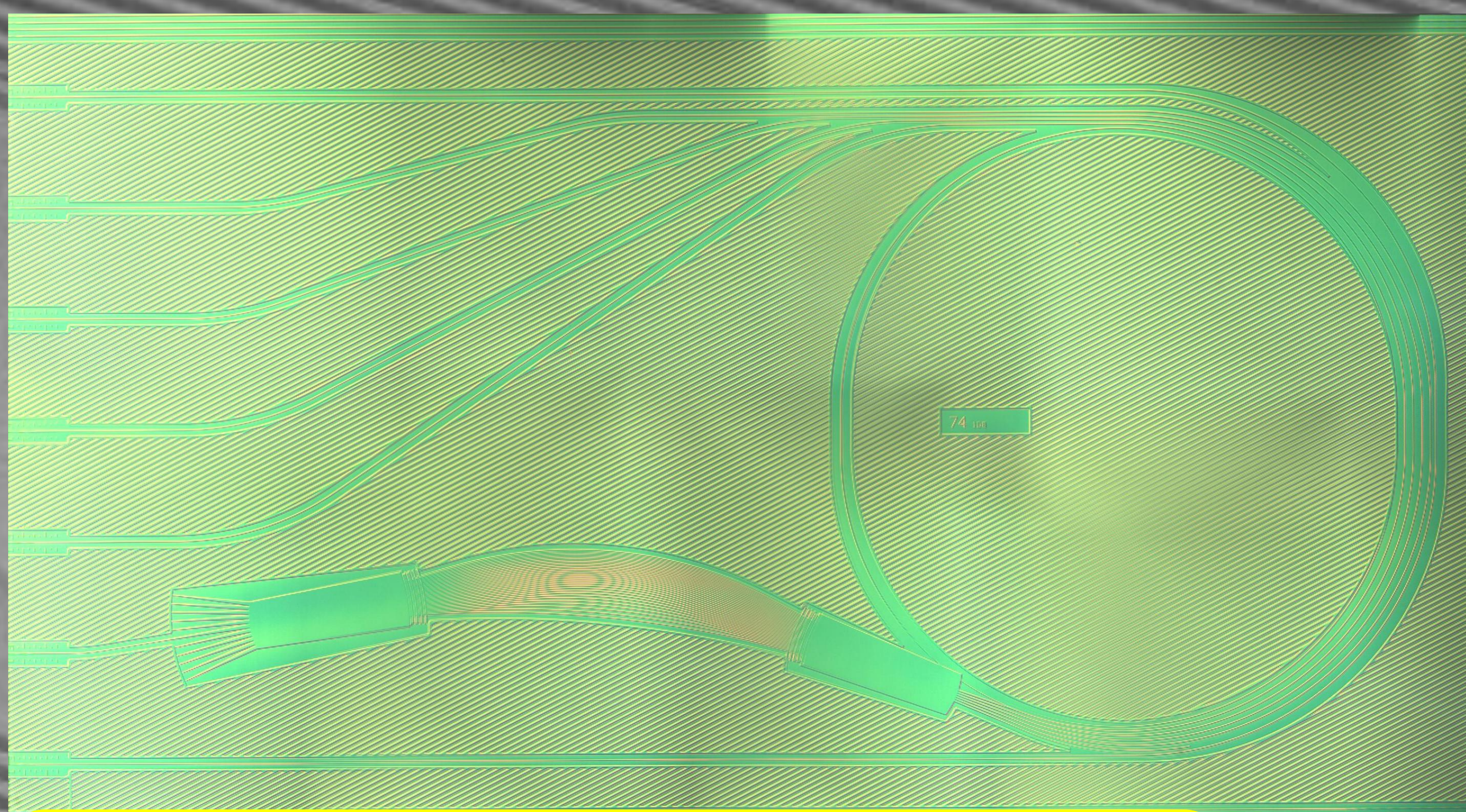
- KrF(248nm) Laser Lithography Technology
- 8 inch Silicon Semiconductor Process
- High Delta Technology
- Spot Size Converter(SSC) Technology
- State of Art Design and Process
- Low Insertion Loss
- High Crosstalk
- Small Polarization Dependence Loss
- Customize SSC available

Applications

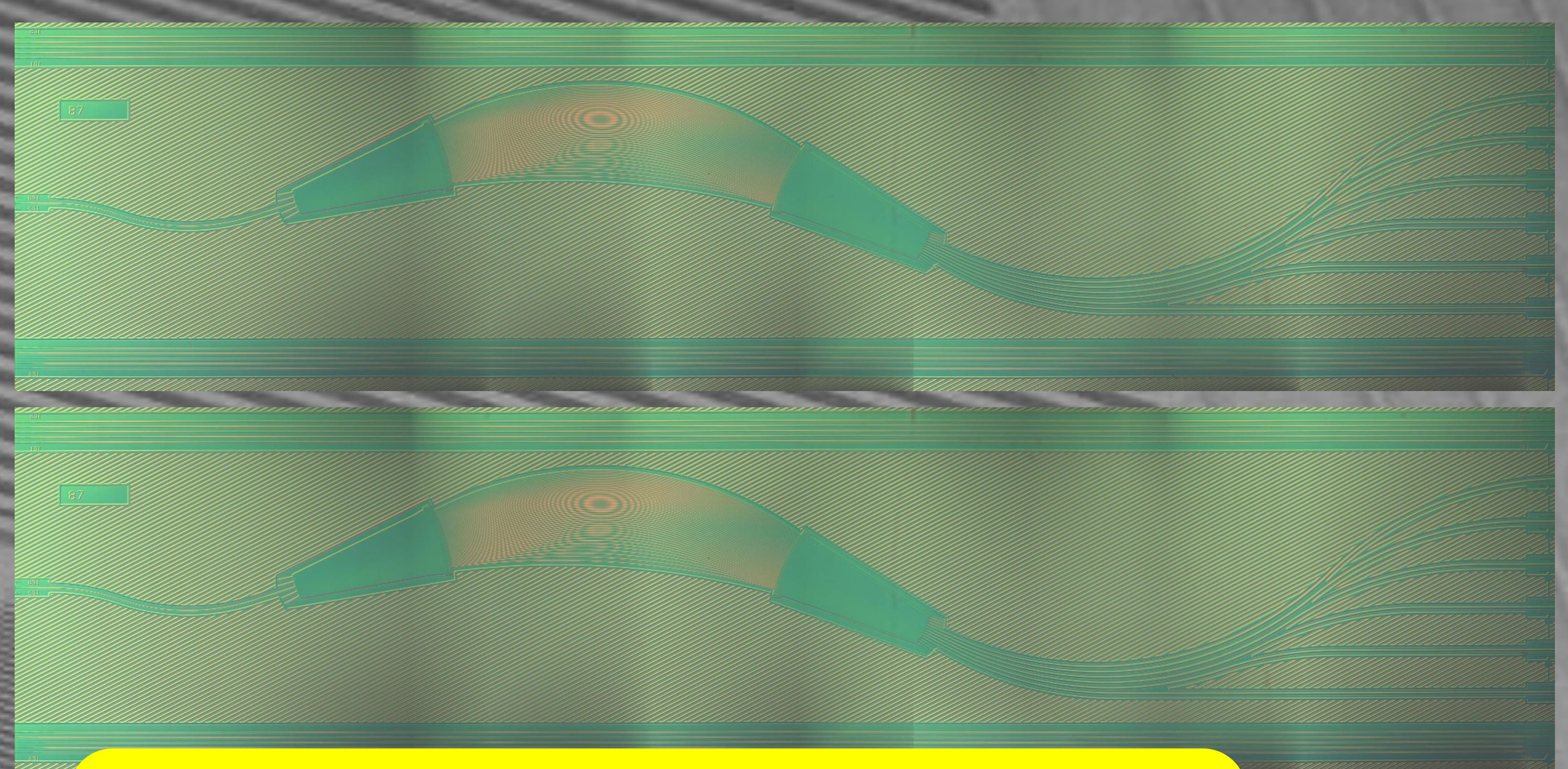
Data Center
5G Application



Mux500



Demux250



Mux Specification

Parameter	Unit	Value	
Channel Spacing	nm	20 (3543GHz)	
Channel No.	Ch	4	
Center wavelength	nm	1271 1291 1311 1331	235.87THz 232.22THz 228.67THz 225.24THz
Insertion Loss	dB	<3.0	
1-dB Band Width	nm	>10	
Output Spacing	um	250 or 500	
Size		9.5x1.6mm 7.0x3.6mm	

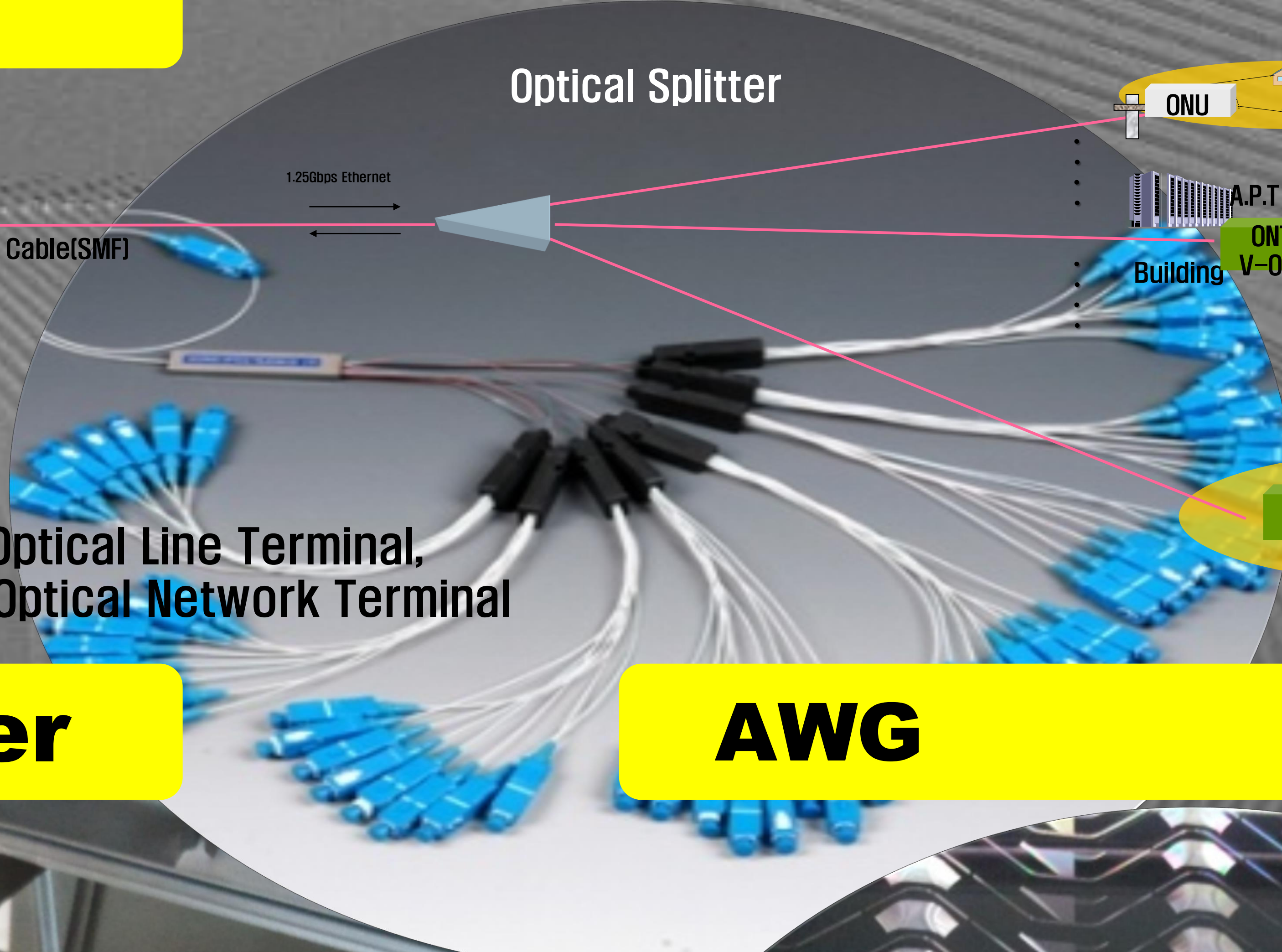
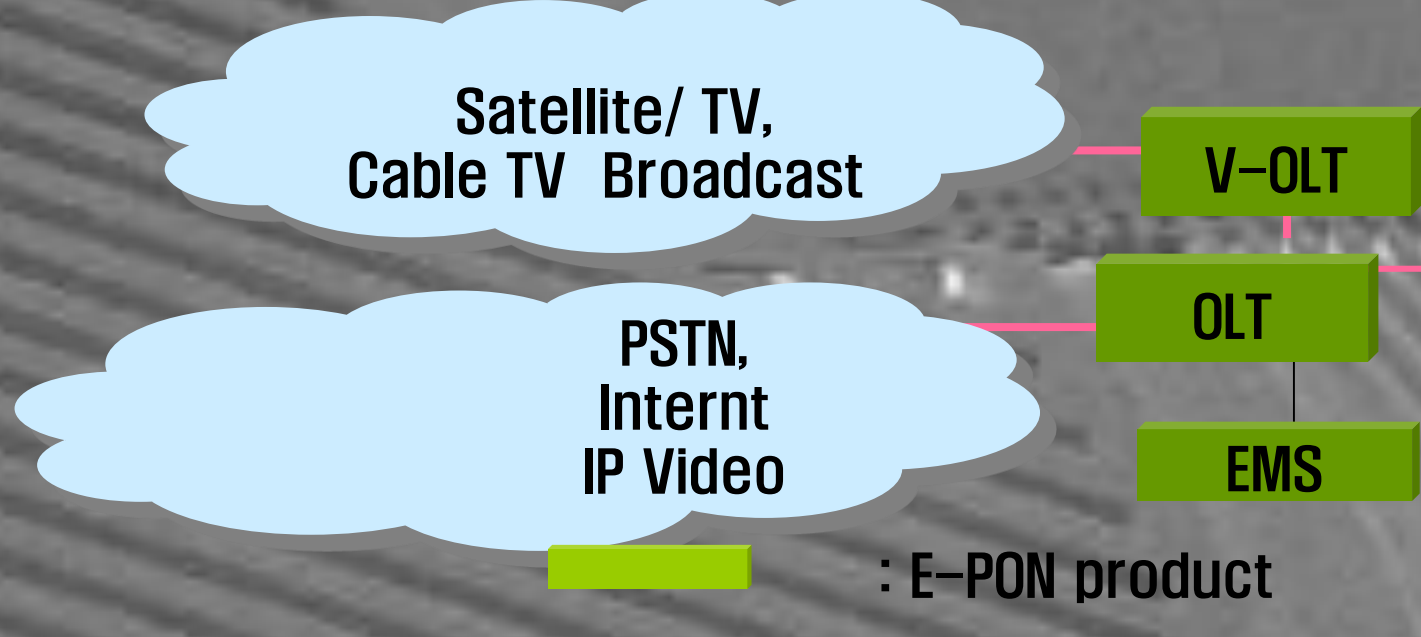
Demux Specification

Parameter	Unit	Value	
Channel Spacing	nm	20	
Channel No.	nm	4	
Center wavelength	nm	1271 1291 1311 1331	235.87THz 232.22THz 228.67THz 225.24THz
Insertion Loss	dB	<2.0	
1-dB Band Width	nm	>12	
3-dB Band Width	nm	>15	
Adj. Channel Cross talk	dB	>21	
Non-Adj. Channel XL	dB	>30	
PDL	dB	<0.7	
Output Spacing	um	250	
Size		9.5x1.6mm	

PLC (PLANAR LIGHTWAVE CIRCUIT)

The World's First 8 inch Quartz wafer mass production

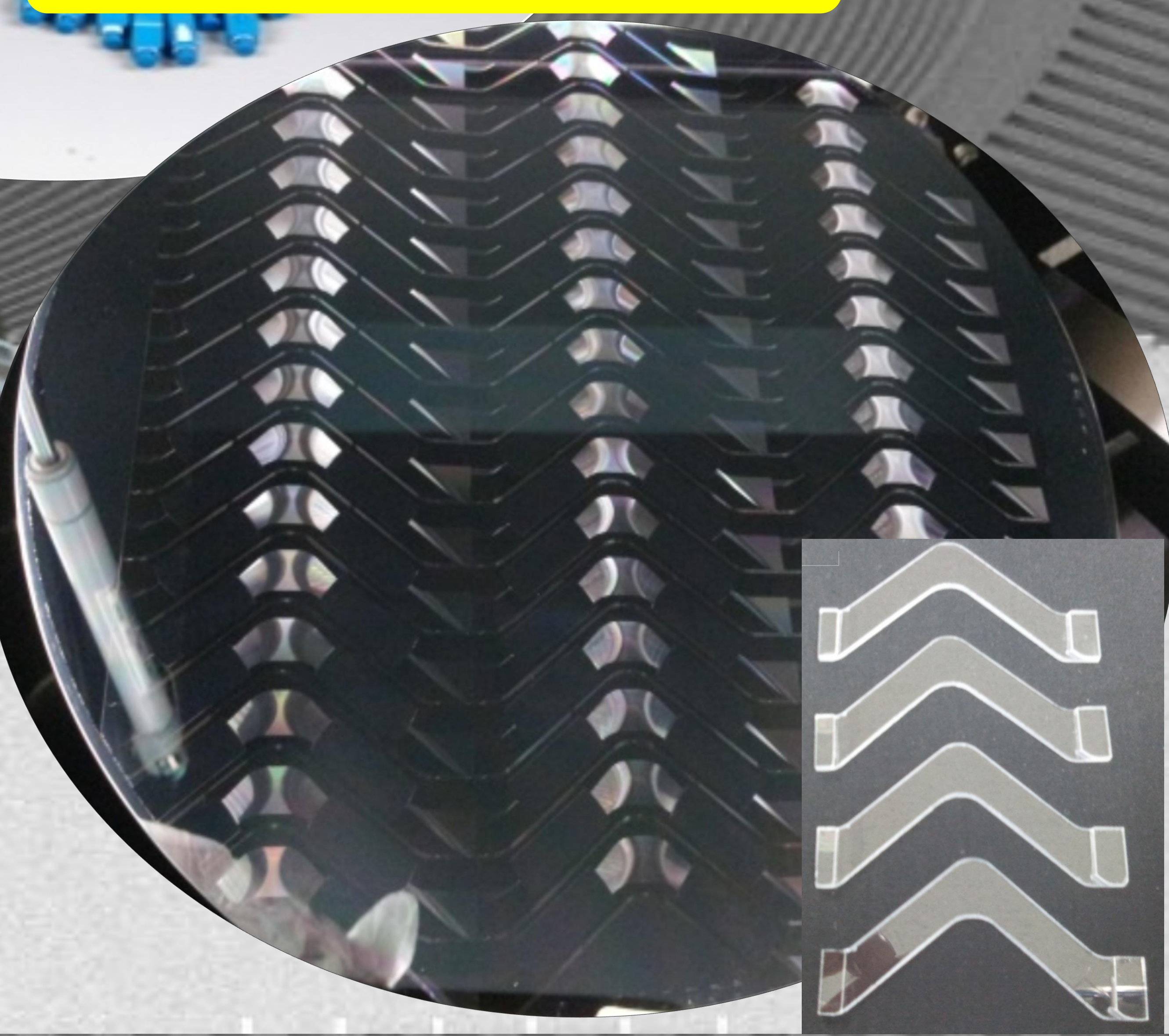
FTTH



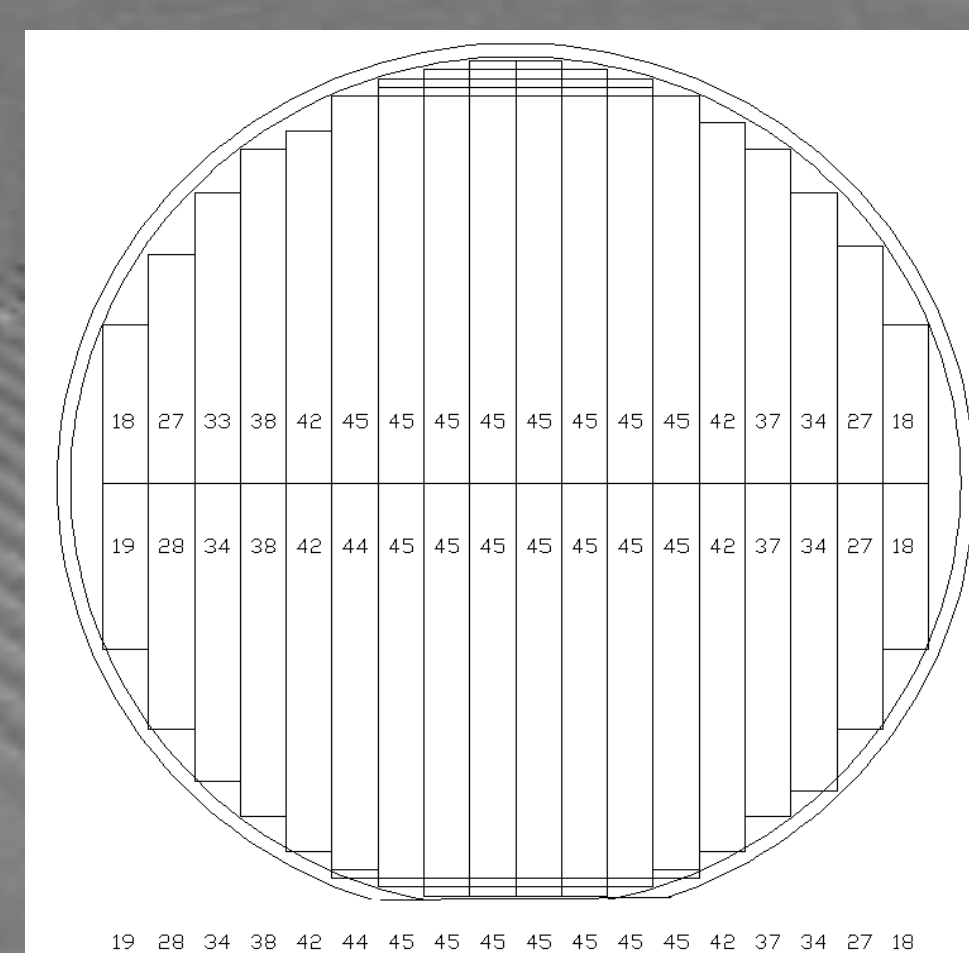
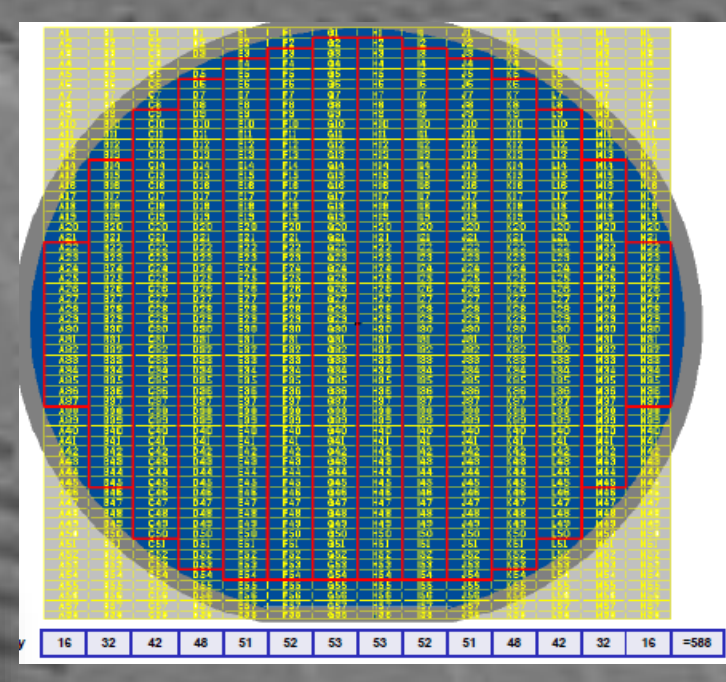
PON : Passive Optical Network, **OLT** : Optical Line Terminal,
ONU : Optical Network Unit, **ONT** : Optical Network Terminal

Optical Splitter

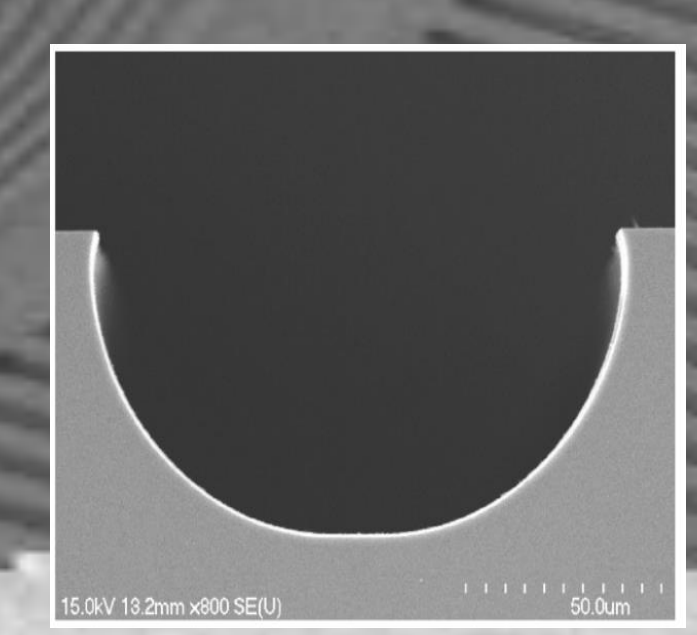
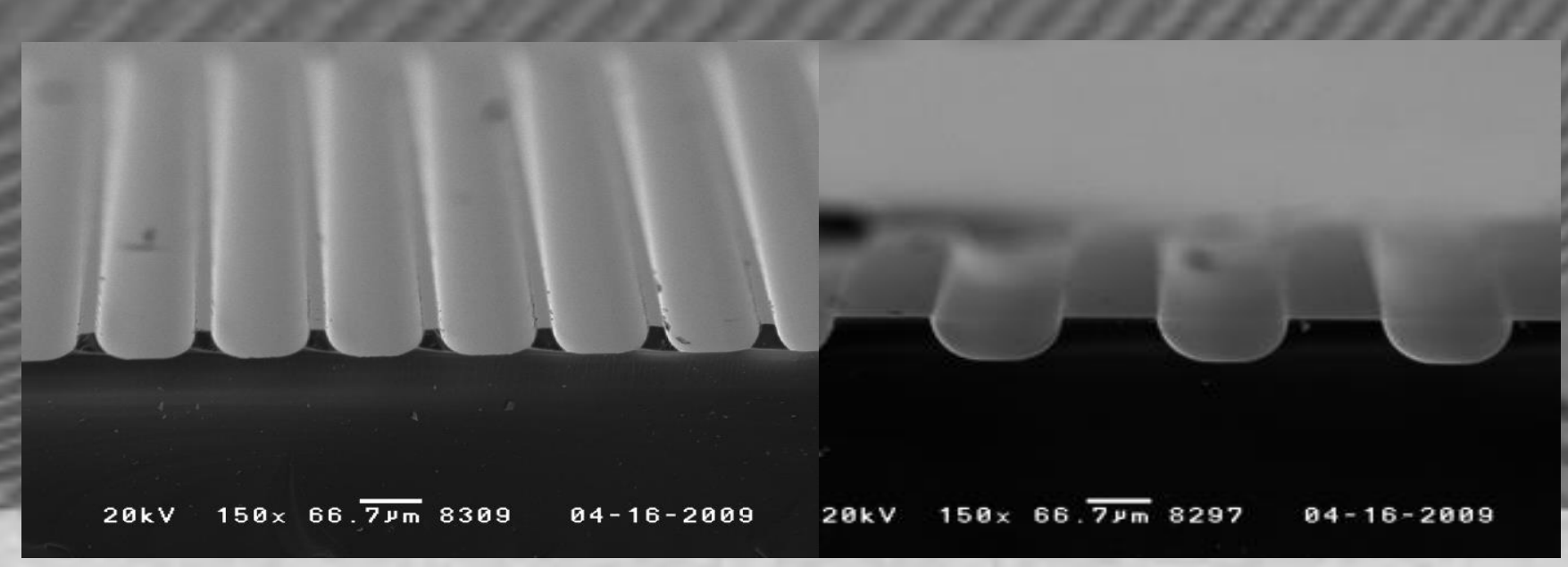
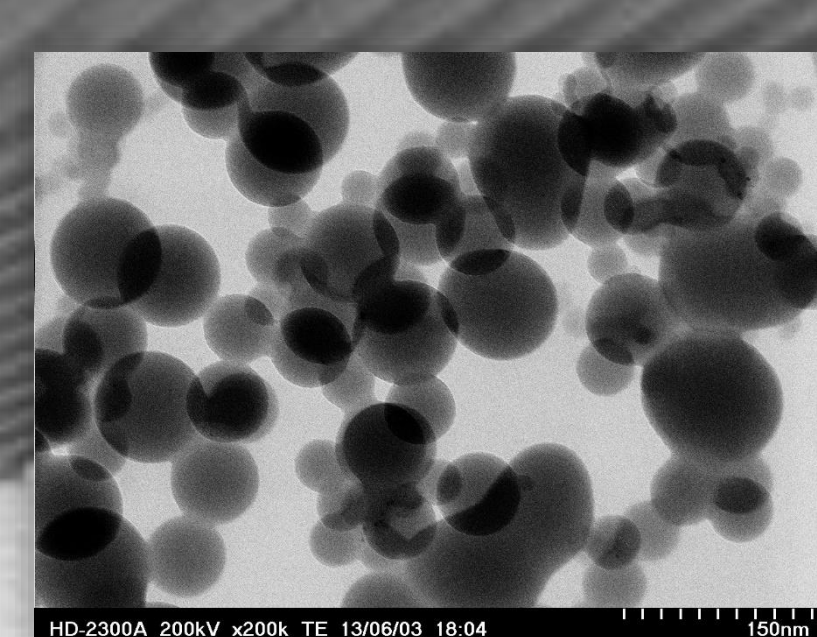
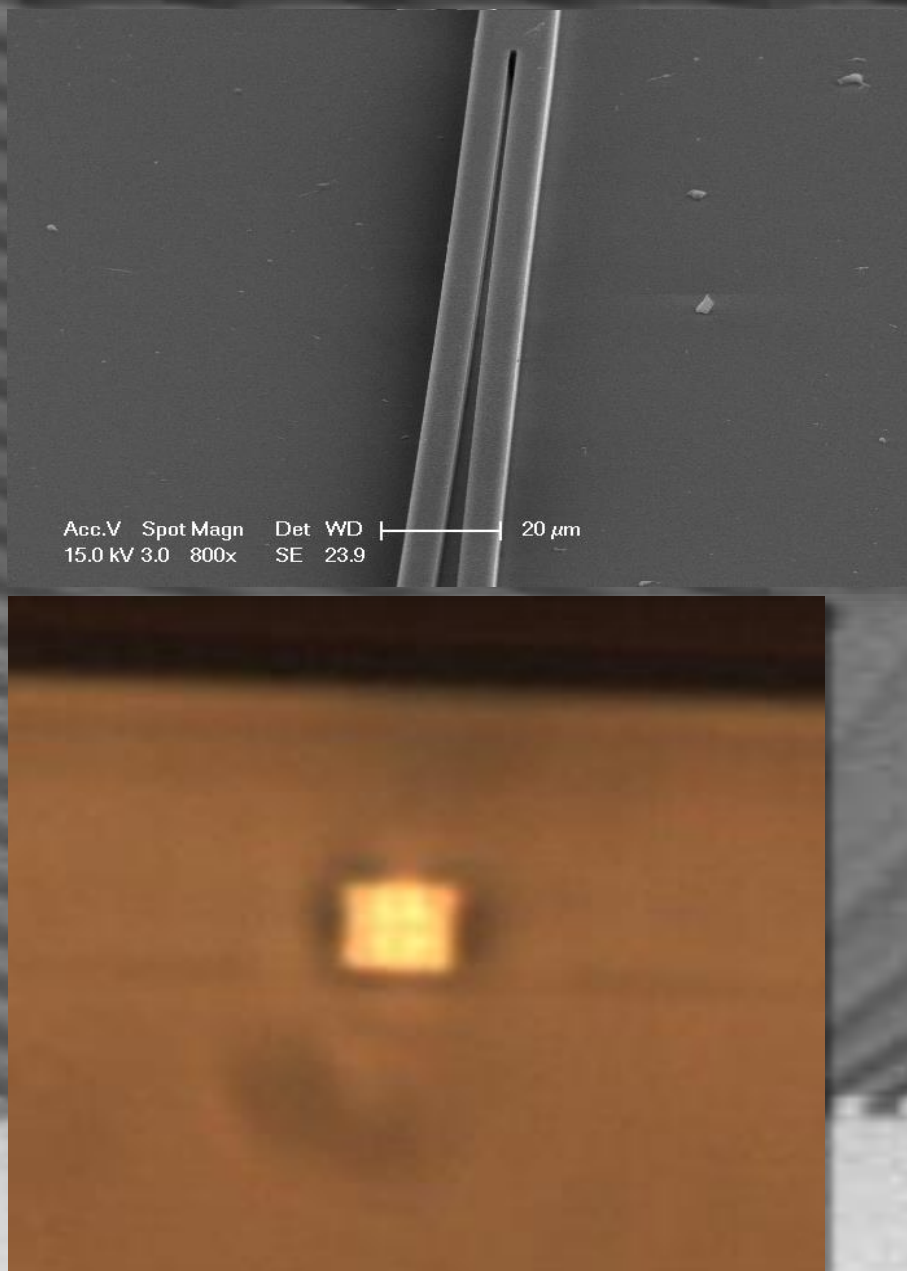
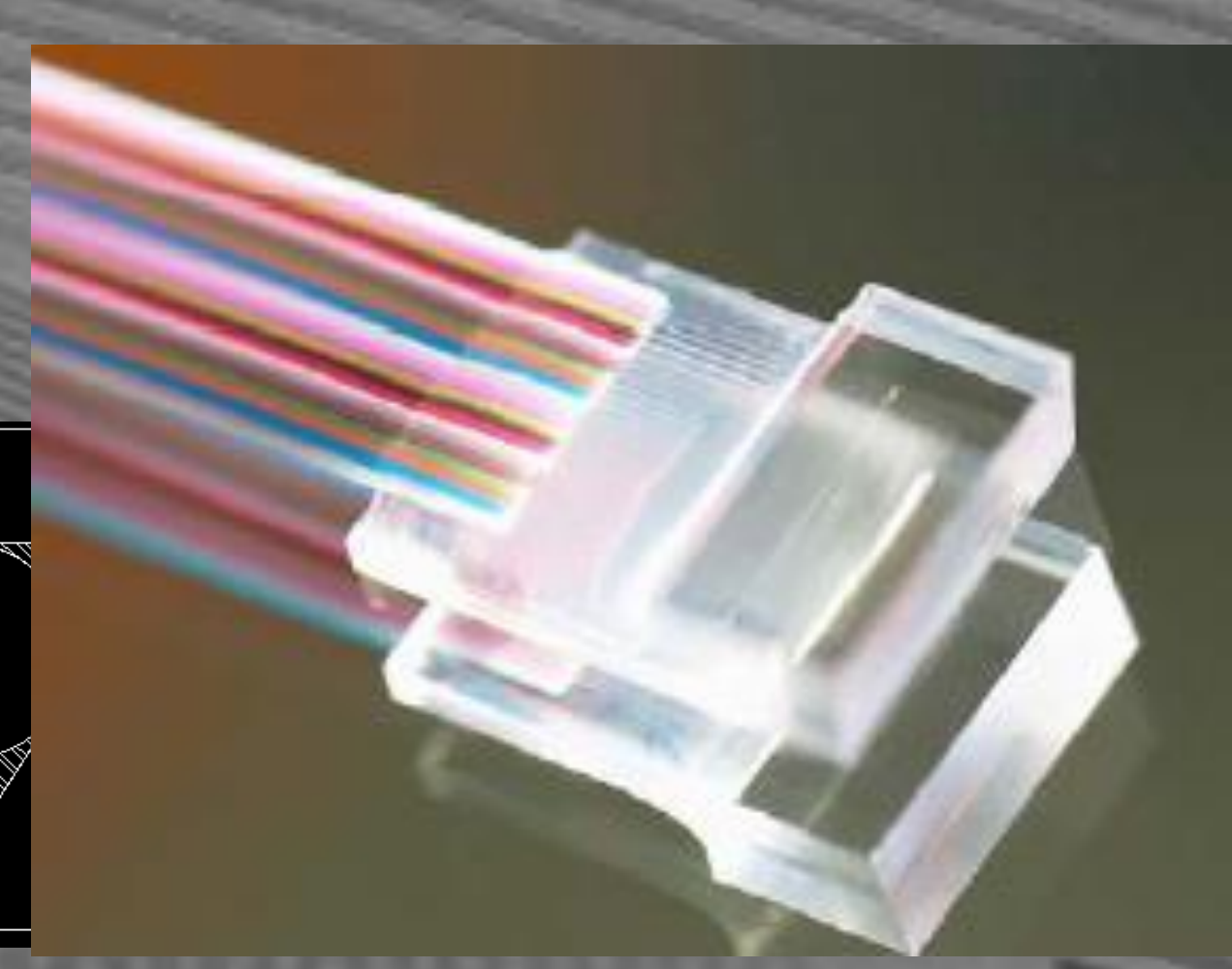
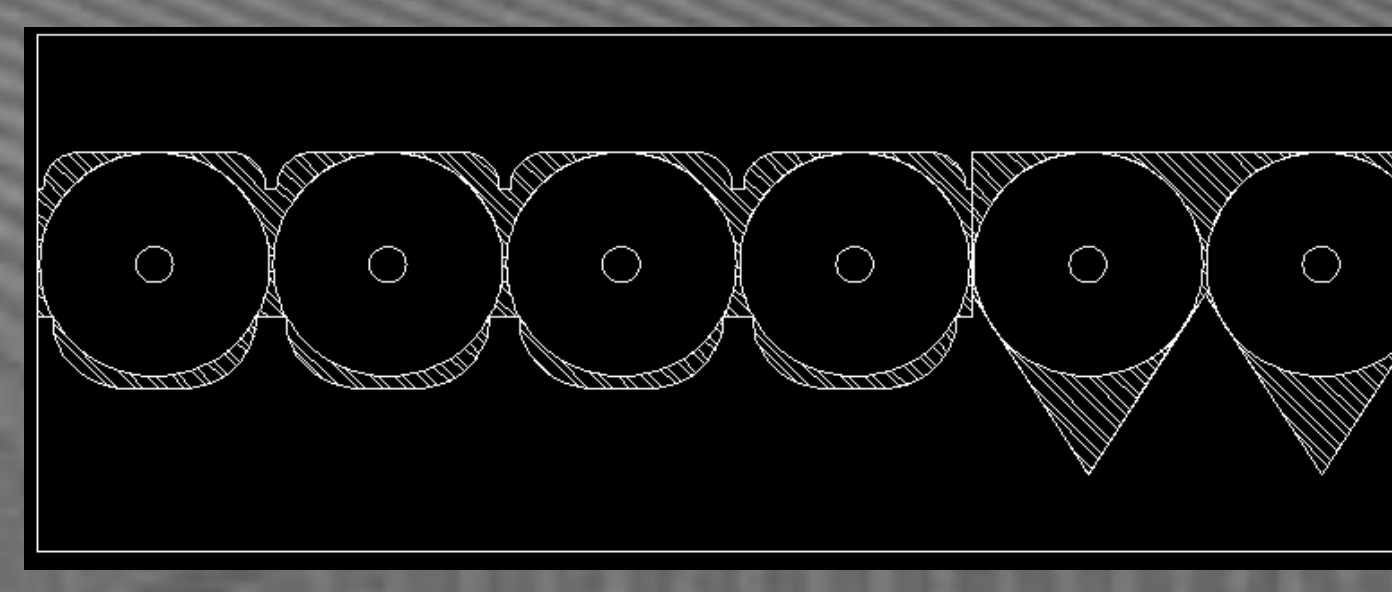
AWG



Fiber Array



The World First
 6 inch → 8 inch wafer



8 inch wafer Process	Way Optics (Yield 90%)
6 inch wafer	others

